

INVESTOR UPDATE

ASX RELEASE

11 September 2025

LOCKSLEY RESOURCES LIMITED

ACN 629 672 144

Level 8, London House 216 St

Georges Terrace

Perth Western Australia 6000

Tel: +61 (08) 9481 0389

Facsimile: +61 (08) 9463 6103

CONTACT

Mr Nathan Lude

Strategy & Capital Markets

Tel: +61 8 9481 0389

DIRECTORS

Pat Burke

Stephen Woodham

Julian Woodcock

Bevan Tarratt

TICKER

ASX: LKY OTCQB: LKYRF FSE:X5L

SHARES ON ISSUE

251,910,631



Highlights

- **249 additional claims staked, increasing Locksley's strategic footprint to over 40 sq km of highly prospective critical minerals ground in California's Mojave region**
- **New ground abuts Locksley's existing tenure and is adjacent to the MP Materials claims which includes the Mountain Pass Rare Earth Mine, the only producing rare earths mine and processing facility in North America**
- **Separate claim package located 3km North and along strike of Dateline Resources (ASX: DTR) Colosseum Mine, encompassing an area with polymetallic and precious metals prospectivity identified from proximal occurrences in USGS geological datasets**
- **Expands Locksley's exploration pipeline across antimony, REEs and polymetallic prospects, reinforcing the Company's positioning within the U.S. critical minerals thematic**
- **Claims were prioritised following geological review of historical datasets and developing understanding of the regional geology and mineralisation potential from ongoing geological and structural mapping**
- **Enhanced optionality for Locksley's Mine-to-Market strategy, which encompasses both upstream project development and downstream critical minerals processing**

Locksley Resources Ltd (ASX: **LKY**, OTCQB: **LKYRF**, FSE: **X5L**) ("**Locksley**" or the "**Company**") is pleased to advise that it has significantly expanded its strategic footprint within the Mojave Critical Minerals Corridor through the staking of an additional 249 claims taking total claims to 491 claims.

These new claims are adjacent to Locksley's existing tenement position and adjoin MP Materials landholding which include the Mountain Pass Rare Earth Mine. In addition, the new claims secure additional acreage abutting the recently identified antimony, rare earth elements (REEs), and polymetallic mineralisation.

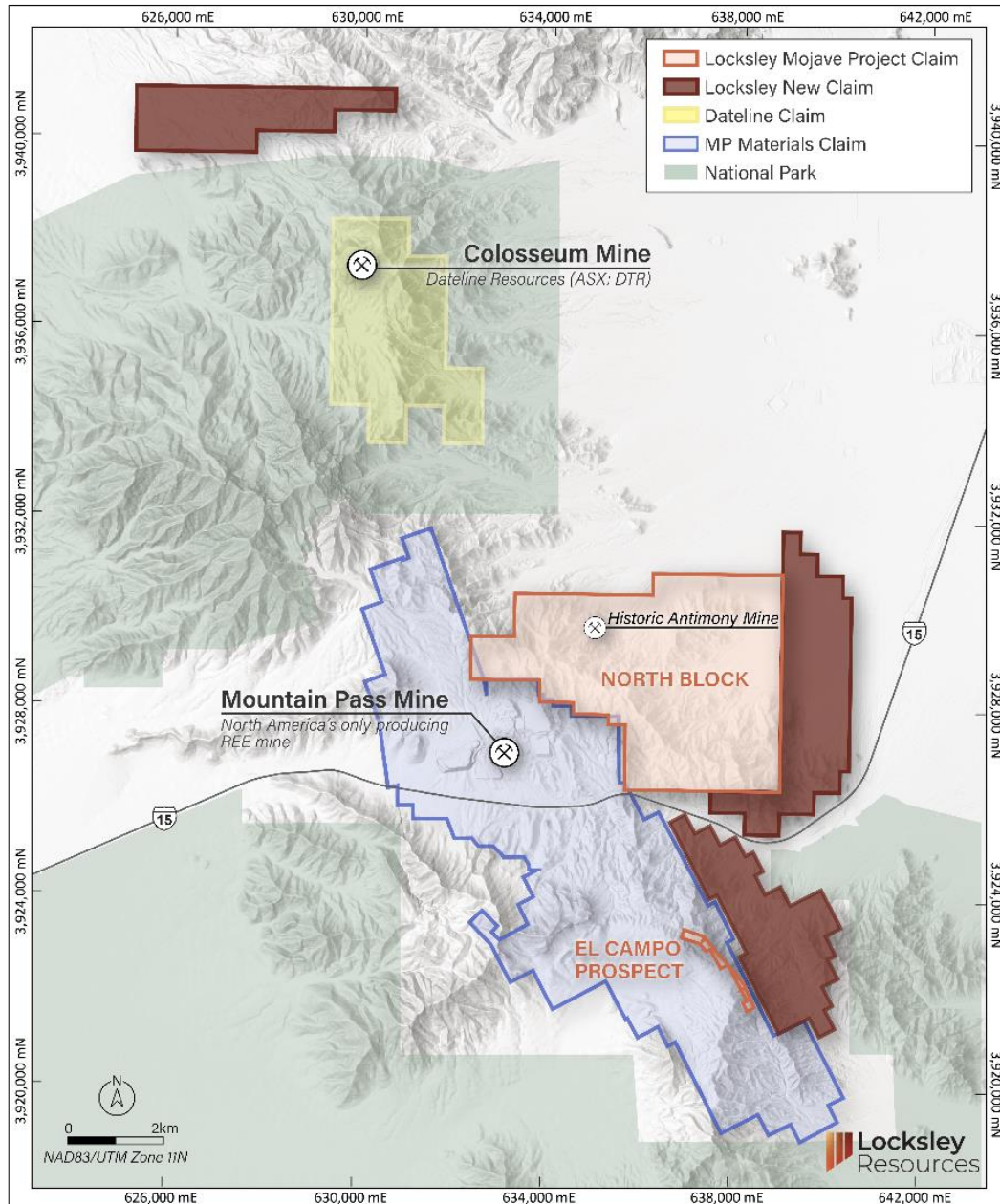


Figure 1: Map showing Locksley Resources current claim package and additional claims staked.

Strategic Rationale

The additional claims significantly strengthen Locksley's competitive positioning within one of the most prospective critical minerals regions in the United States. With demand for antimony and REEs underpinned by U.S. supply chain security initiatives, the expanded landholding provides Locksley with a broader platform to advance multiple exploration and development opportunities.

The south-east claims encompass the favourable gneissic geology which hosts the Mountain Pass mine and carbonatites. Significantly, there are substantial regional north to north-west striking structures evident in the magnetic geophysics datasets. These transgress across the areas staked which conceptually have the potential to host pathways for REE bearing carbonatites and be related to other styles of mineralisation.

The Northern claims are 3km directly along strike from Dateline Resources Colosseum Gold Project. In addition, the USGS geochemical database indicates polymetallic and precious metals occurrences in the area immediately adjoining the new northern claims. As such there are multiple commodity opportunities evident within this claim area.

Importantly, several of the new claims directly adjoin the Mountain Pass larger claim package, underlining the strategic significance of Locksley's footprint within the corridor. This positioning enhances potential for both exploration discovery and long-term commercialisation pathways, including downstream processing partnerships in line with U.S. government priorities for supply chain resilience.

Locksley's Technical Director Julian Woodcock, commented:

"This expansion materially enhances our strategic footprint in the Mojave Corridor, a region central to U.S. critical minerals security. With additional ground abutting our existing claims and adjoining the MP Materials Mountain Pass larger claim package, we are exceptionally well positioned to advance a diversified pipeline of exploration and downstream opportunities across antimony, rare earths, other critical minerals and precious metals potential."

Claim Staking

Locksley has completed the claim staking activities and the filing process has been initiated . No competing claims were identified in the areas staked and Locksley is confident that the ground rights will be confirmed in the adjudication process, however the process needs to be completed until mineral rights are granted.

Next Steps

Locksley will prioritise:

- Completing registration activities of the new claims with the required Federal and State Agencies;
- Compilation and integration of new geological data from the expanded tenure;
- Design of stream sediment and rock chip sampling programs across the area with intention to be undertaken in Q4 2025;
- Systematic exploration targeting high-priority antimony, REE and polymetallic anomalies; and
- Advancing permitting activities across the consolidated claim block to fast-track drilling approvals.

For further information, please contact:

Locksley Resources Limited

T: +61 8 9481 0389

info@locksleyresources.com.au

This announcement has been authorized for release by the Board of Directors of Locksley Resources.

Competent Persons Statement

Information in this release that relates to Exploration Results is based on information compiled by Mr Julian Woodcock, who is a Member of the Australian Institute of Mining and Metallurgy (MAusIMM(CP) 305446). Mr Woodcock is a Technical Director of Locksley Resources Limited and has sufficient experience relevant to the style of mineralisation and type of deposit under consideration. Mr Woodcock consents to the inclusion in this report of the matters based on his information in the form and context in which it appears.

Forward-Looking Statements

This announcement contains forward-looking statements relating to the Company's exploration activities. Such statements are not guarantees of future performance and are subject to risks and uncertainties. Actual results may differ materially from those described.

ASX RELEASE

11 September 2025

LOCKSLEY RESOURCES LIMITED

ACN 629 672 144

Level 8, London House 216 St
Georges Terrace

Perth Western Australia 6000

Tel: +61 (08) 9481 0389

Facsimile: +61 (08) 9463 6103

CONTACT

Mr Nathan Lude

Strategy & Capital Markets

Tel: +61 8 9481 0389

DIRECTORS

Pat Burke

Stephen Woodham

Julian Woodcock

Bevan Tarratt

TICKER

ASX: LKY OTCQB: LKYRF FSE:X5L

SHARES ON ISSUE

251,910,631

**About Locksley Resources Limited**

Locksley Resources Limited is an ASX listed explorer focused on critical minerals in the United States of America. The Company is actively advancing exploration across two key assets: the Mojave Project in California, targeting rare earth elements (REEs) and antimony. Locksley Resources aims to generate shareholder value through strategic exploration, discovery and development in this highly prospective mineral region.

Mojave Project

Located in the Mojave Desert, California, the Mojave Project comprises over 250 claims across two contiguous prospect areas, namely, the North Block/Northeast Block and the El Campo Prospect. The North Block directly abuts claims held by MP Materials, while El Campo lies along strike of the Mountain Pass Mine and is enveloped by MP Materials' claims, highlighting the strong geological continuity and exploration potential of the project area.

In addition to rare earths, the Mojave Project hosts the historic "Desert Antimony Mine", which last operated in 1937. Despite the United States currently having no domestic antimony production, demand for the metal remains high due to its essential role in defense systems, semiconductors, and metal alloys. With significant surface sample results, the Desert Mine prospect represents one of the highest-grade known antimony occurrences in the U.S.

Locksley's North American position is further strengthened by rising geopolitical urgency to diversify supply chains away from China, the global leader in both REE & antimony production. With its maiden drilling program planned, the Mojave Project is uniquely positioned to align with U.S. strategic objectives around critical mineral independence and economic security.

Tottenham Project

Locksley's Australian portfolio comprises the advanced Tottenham Copper-Gold Project in New South Wales, focused on VMS-style mineralisation in a well established mining region.

Locksley is committed to delivering value through discovery, development, and strategic partnerships, with a focus on securing access to U.S. aligned funding and downstream collaborations.

